

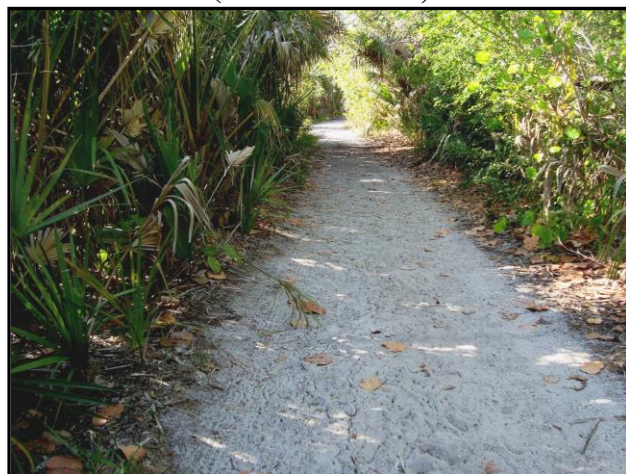
Nature Notes

...from Sharon

BBP Plant Listing by Common Name (Rev. 3/19/2020)

After 10 years, we have made some updates!

When first endeavoring to write Nature Notes on various plants within Barefoot Beach Preserve, I kept having this nagging *need to know* just what plants were here. Over numerous months, this led me on a search of reports and information documented by specialists in the field and ultimately the need to develop a listing to be used as an easy reference. As I will be writing fewer Nature Notes over the next few months due to travel plans, I want to leave our volunteers with this list to use. Search out for yourself the wonderful plants to be found in our Preserve.



Many people contributed information and copies of reports to enable compiling this document. Special appreciation goes to: Maura Kraus and Margaret Winn for various portions or copy of the Barefoot Beach Preserve (BBP) Land Management Plan; Dr. Jim Burch for his 2000 listing of plants within BBP; Ranger Mauricio Araquistain for copy of his 2007 plant survey; Margie Hamilton for copy of her 2009 plant survey; and Jan Bachrach for copy of Elliott Brown's 1994 plant notes and copy of 2006-2007 survey by Dr. George Wilder used for comparison.

This listing has been compiled specifically from reports provided by: Dr. Jim Burch, Mauricio Araquistain, and Margie Hamilton. If common/scientific names, status, or protection designation was not provided or it conflicted, then information was researched at USDA or FloriData and incorporated in this listing. If one report gave same common name, but different scientific name, both were listed individually, unless it was determined that scientific name was a synonym to the other, then it was combined and noted as synonym. A few scientific names could not be verified and are so noted. Common names are just that...common; and sometimes different plants are given the same or similar common name, in which case both were listed individually.

As of 2020, there are 229 plants documented within the Preserve. Within this listing, the State of Florida has designated 8 as Endangered and 14 as Threatened, so you can see how precious our Preserve is. Enjoy!

2020 BBP Plant Listing by Common Name

Common Name	Scientific Name	Status	Protection Designation
air plant - ball moss	<i>Tillandsia recurvata</i>	native	
air plant - cardinal, quill leaf, common wild pine, stiff-leaved wild pine	<i>Tillandsia fasciculata</i>	native	Endangered
air plant - giant wild pine	<i>Tillandsia utriculata</i> L.	native	Endangered
air plant – Southern needleleaf	<i>Tillandsia setacea</i> Sw.	native	
air plant - potbelly airplant	<i>Tillandsia paucifolia</i> Baker	native	
air plant - Spanish moss	<i>Tillandsia usneoides</i> (L.) L.	native	
air plant - twisted airplant	<i>Tillandsia flexuosa</i>	native	Threatened
air plant - Northern needleleaf	<i>Tillandsia balbisiana</i>	native	Threatened
alligator weed	<i>Alternanthera philoxeroides</i>	invasive	

annual ragweed, common ragweed	<i>Ambrosia artemisiifolia</i>	native	
arrow feather threeawn	<i>Aristida purpurascens</i>	native	
Australian pine	<i>Casuarina litorea</i>	invasive	
balsam pear, balsam apple, bittergourd	<i>Momordica charantia</i>	introduced	
bamboo vine (thick leaf), laurel greenbrier	<i>Smilax laurifolia</i>	native	
bay cedar	<i>Suriana maritima</i>	native	Endangered
beach bean, beach pea, bay bean, seaside jackbean	<i>Canavalia rosea</i> ; synonym <i>Canavalia maritima</i>	native	
beach creeper, golden creeper, coughbush	<i>Ernodia littoralis</i>	native	Threatened
beach elder, seacoast marsh elder	<i>Iva imbricata</i>	native	
beach moonflower, morning glory	<i>Ipomoea violacea</i> L.; synonym: <i>Ipomoea tuba</i>	native	
bedstraw	<i>Galium hispidulum</i>	native	
beggar ticks	<i>Bidens alba</i>	native	
Benjamin fig	<i>Ficus benjamina</i>	exotic	
black bead	<i>Pithecellobium guadalupense</i>	native	
black bead, ram's horn	<i>Pithecellobium keyensis</i>	native	Threatened
blechnum fern, toothed midsorus fern, swamp fern	<i>Blechnum serrulatum</i>	native	
blood leaf	<i>Iresine diffusa</i>	native	
bloodberry, rougeplant	<i>Rivina humilis</i>	native	
blue porterweed	<i>Stachytarpheta jamaicensis</i>	native	
bluecurls, forked bluecurls	<i>Trichostema dichotomum</i>	native	
bluestem	<i>Andropogon sp.</i>	native	
Brazilian pepper	<i>Schinus terebinthifolius</i>	invasive	
buckthorn, saffron plum	<i>Bumelia celastrina</i>	native	
butterfly orchid	<i>Encyclia tampensis</i> ; synonym: <i>Epidendrum tampensis</i>	native	Threatened
butterfly pea - spurred	<i>Centrosema virginianum</i>	native	
butterfly pea, sweetscented pigeonwings	<i>Clitoria fragrans</i>	native	Endangered
buttonwood - green	<i>Conocarpus erectus</i>	native	
candyroot, showy milkwort	<i>Polygala grandiflora</i>	native	
cat claw	<i>Pithecellobium unguis-cati</i>	native	
chaff flower, yellow joyweed	<i>Alternanthera ramosissima</i> ; synonym: <i>Alternanthera flavescens</i> Kunth	native	
chandelier plant	<i>Kalanchoe tubiflora</i>	introduced	
Christmasberry	<i>Crossopetalum ilicifolium</i>	native	Threatened

Christmas-berry, matrimony vine	<i>Lycium carolinianum</i>	native	
coastal bristlegrass	<i>Setaria corrugata</i>	native	
coastal ragweed, ambrosia	<i>Ambrosia hispida</i>	native	
coatbuttons	<i>tridax procumbens</i>	non-native	
coco plum	<i>Chrysobalanus icaco</i>	native	
coin vine	<i>Dalbergia ecastophyllum</i>	native	
comb polypody, palmleaf rockcap fern, swamp polypody	<i>Pecluma ptilodon</i>	native	Endangered
common morning glory	<i>Ipomoea purpurea</i>	native	
coral bristlegrass	<i>Setaria macrosperma</i>	native	
cow pea, hairy pod cowpea	<i>vigna luteola</i>	native	
Creeping beggarweed or Spanish clover/Tick-trefoil	<i>Desmodium incanum</i>	introduced	
creeping Charlie, turkey tangle	<i>Phyla nodiflora</i>	native	
creeping woodsorrel, common yellow woodsorrel	<i>Oxalis corniculata L.</i>	native	
croton	<i>Croton glandulosus</i>	native	
cutleaf evening primrose	<i>Oenothera laciniata</i>	native	
dayflower, whitemouth dayflower	<i>Commelina erecta</i>	native	
diamond flowers	<i>Stenaria nigricans;</i> <i>synonym: Hedyotis nigricans</i>	native	
dog fennel	<i>Eupatorium capillifolium</i>	native	
Drummond's leaf-flower	<i>Phyllanthus abnormis</i>	native	
ear-leaf acacia	<i>Acacia auriculaeformis</i>	invasive	
eastern milkpea	<i>Galactia regularis</i>	native	
Everglades poinsettia, pineland spurge	<i>Poinsettia pinetorum</i>	native	Endangered
false buttonwood, Everglades Key false buttonwood	<i>Spermacoe terminalis</i>	native	
false sisal (in century plant family)	<i>Agave decipiens</i>	native	
firebush, scarletbush	<i>hamelia patens Jacq.</i>	native	
fleabane, sweetscent, salt marsh fleabane	<i>Pluchea odorata</i>	native	
Florida privet	<i>Forsetiera segregata</i>	native	
Florida trema	<i>Trema micrantha</i>	native	
fragrant flatsedge	<i>Cyperus odoratus</i>	native	
frostweed, white crownbeard, frostbeard	<i>Verbesina virginica</i>	native	
gale of wind, carry me seed	<i>Phyllanthus amarus</i>	introduced	
glasswort	<i>Salicornia virginica,</i> <i>Salicornia bigelovii</i>	native	
goatweed	<i>Capraria biflora</i>	native	

golden polypody, goldfoot, serpent fern	<i>Phlebodium aureum</i>	native	Threatened
goldenrod	<i>Solidago stricta</i>	native	
grass - bahia grass	<i>Paspalum notatum</i>	introduced?	
grass - bluestem, broomsedge	<i>Andropogon virginicus</i>	native	
grass - bushy bluestem, bushy beardgrass, broom sedge	<i>Andropogon glomeratus</i>	native	
grass - cord grass, salt meadow cordgrass, marshbay cordgrass	<i>Spartina patens</i>	native	
grass - crow foot grass	<i>Dactyloctenium aegyptium</i>	invasive	
grass – Giant Bristlegrass	<i>Setaria magna</i>	native	
grass - foxtail (coastal)	<i>Setaria corrugate</i> (listed in report as <i>Secal Corrugata</i>)	native	
grass - hurricane grass	<i>Fimbristylis spathacea</i>	exotic	
grass - hurricane grass, spike rush	<i>Fimbristylis cymosa</i>	exotic	
grass - knot grass	<i>Paspalum distichum L.</i>	native	
grass - lovegrass	<i>Eragrostis ciliaris</i>	introduced	
grass - natalgrass	<i>Melinis repens</i> ; synonym: <i>Rhynchelytrum repens</i>	invasive	
grass - panic grass	<i>Dichanthelium sp.</i>	native	
grass - bitter panic grass	<i>Panicum amarum</i> (listed in report as <i>Paspalum amarum</i> not found)	native	
grass - pinewoods fingergrass	<i>Eustachys petraea</i>	native	
grass - salt grass	<i>Distichlis spicata</i>	native	
grass - saltmarsh fingergrass	<i>Eustachys glauca</i>	native	
grass - signal grass	<i>Urochloa distachya</i>	introduced	
grass - slender crabgrass	<i>Digitaria filiformis</i>	native	
grass - tall threeawn	<i>Aristida patula</i>	native	
grass- basket grass	<i>Oplismenus setarius</i>	native	
greenbriar, earleaf greenbrier, cat brier	<i>Smilax auriculata</i>	native	
groundcherry, Coastal Groundcherry	<i>Physalis angustifolia</i> ; synonym: <i>Physalis viscosa</i>	native	
groundcherry, Cypresshead Groundcherry	<i>Physalis arenicola</i>	native	
groundcherry, sand cherry, Walter's groundcherry	<i>Physalis walteri</i>	native	
gumbo limbo	<i>Bursea simaruba</i>	native	
hairy indigo, roughhairy indigo	<i>Indigofera hirsuta</i>	introduced	
hog plum	<i>Ximenia americana</i>	native	
hyssop - herb of grace	<i>Bacopa monnieri</i>	native	
hyssop - water hyssop, blue waterhyssop	<i>Bacopa caroliniana</i>	native	

inkberry, beachberry, gullfeed	<i>Scaevola plumieri</i>	native	Threatened
Jamaica dogwood, fish poison tree, fishfuddle tree	<i>Piscidia piscipula</i>	native	
joyweed	<i>Alternanthera maritima</i>	native	
Kiss me quick, hairy portulaca	<i>Portulaca pilosa</i>	native	
lantana (white), wild sage, coastal buttonsage	<i>Lantana involucrata</i>	native	
leafless swallow-wort	<i>Cynanchum scoparium</i>	native	
leather fern, coast leather fern, golden leather fern	<i>Acrostichum danaeifolium</i> , <i>Acrostichum aureum</i>	native	Threatened
live oak	<i>Quercus virginiana</i>	native	
lovevine, devil's gut, woevine	<i>Cassytha filiformis</i>	native	
mangrove - black	<i>Avicennia germinans</i>	native	
mangrove - red	<i>Rhizophora mangle</i>	native	
mangrove - white	<i>Laguncularia racemosa</i>	native	
mangrove rubbervine	<i>Rhabdadenia biflora</i>	native	
marlberry	<i>Ardisia escallonoidea</i>	native	
marsh elder, big leaf sumpweed, Jesuit's bark	<i>Iva frutescens L.</i>	native	
mastic	<i>Mastichodendron foetidissimum</i> ; synonym: <i>Sideroxylon foetidissimum</i>	native	
Mexican clover	<i>Richardia brasiliensis</i>	exotic	
milkpea	<i>Galactea volubilis</i>	native	
moonflowers, tropical white morning glory	<i>Ipomoea alba L.</i>	native	
morning glory - oceanblue	<i>Ipomoea indica</i>	native	
muscadine grape	<i>Vitis munsoniana</i>	native	
muscadine grape	<i>Vitis rotundifolia</i>	native	
myrsine	<i>Rapanea punctata</i>	native	
narrow leaved hoary pea, devils shoestring, wild bushbean	<i>Macroptilium lathyroides</i>	introduced	
naupaka, beach naupaka	<i>Scaevola sericea</i> & <i>S.taccada</i>	invasive	
necklace-pod	<i>Sophora tomentosa</i>	native	
nickerbean, gray nickerbean	<i>Caesalpinia bonduc</i>	native	
nightshade	<i>Solanum americanum</i>	native	
papaya	<i>Carica papaya</i>	exotic	
passion vine	<i>Passiflora suberosa</i>	native	
pencil flower, cheesytoes	<i>Stylosanthes hamata</i>	native	
pepperweed, peppergrass, poor man's pepper	<i>Lepidium virginicum L.</i>	native	
periwinkle, Madagascar periwinkle	<i>Catharanthus roseus</i>	(naturalized)	
pigeon pea	<i>Cassia chamaecrista</i>	native	

pimpernel, water pimpernel, lime water brookweed	<i>Samolus ebracteatus</i>	native	
pineland allamanda, pineland golden trumpet	<i>Angadenia berteroi</i>	native	Threatened
pitted beardgrass	<i>Bothriochloa pertusa</i>	introduced	
poison ivy, eastern poison ivy	<i>Toxicodendron radicans</i>	native	
pokeweed	<i>Phytolacca americana L.</i>	native	
pond apple	<i>Annona glabra</i>	native	
poorman's patch	<i>Mentzelia floridana Nutt.</i>	native	
prickly pear cactus	<i>Opuntia humifusa</i>	native	Threatened
prickly pear cactus, shell mound prickly pear, erect prickly pear	<i>Opuntia stricta</i>	native	Threatened
Purslane - little hog weed	<i>Portulaca oleracea</i>	introduced	
rabbitbells	<i>Crotalaria rotundifolia</i>	native	
railroad vine, goats foot vine	<i>Ipomoea pes-caprae</i>	native	
rattlesnake weed, shakeshake	<i>Crotalaria incana</i>	non-native	
red bay	<i>Persea borbonia</i>	native	
red mulberry	<i>Morus ruba</i>	native	
rosary pea	<i>Abrus precatorius</i>	invasive	
sabal palm, cabbage palm	<i>Sabal palmetto</i>	native	
salt wort, saltwort, Russian thistle, turtleweed	<i>Batis maritima</i>	native	
saltbush, groundsel	<i>Baccharis halimifolia</i>	native	
saltmarsh false foxglove	<i>Agalinis maritima</i>	native	
samphire, saltweed, silverhead	<i>Blutaparon vermiculare</i>	native	
sandbur, coastal sandbur	<i>Cenchrus spinifex</i>	native	
sandspur, coastal sandbur	<i>Cenchrus incertus</i>	native	
saw palmetto	<i>Serenoa repens</i>	native	
schefflera	<i>Brassaoa actinophylla</i> Endl.; synonym: <i>Schefflera actinophylla</i> (Endl.) Harms	non-native	
scorpion's-tail, heliotrope	<i>Heliotropium angiospermum</i>	native	
sea grape	<i>Coccoloba uvifera</i>	native	
sea lavender	<i>Limonium carolinianum</i>	native	Endangered
sea oats	<i>Uniola paniculata</i>	native	
sea oxeye, sea daisy, bushy seaside oxeye	<i>Borrichia frutescens</i>	native	
sea purslane	<i>Sesuvium portulacastrum</i>	native	
sea rocket, coastal sea rocket	<i>cakile lanceolata</i>	native	
seablite, sea blight, annual seepweed	<i>Suaeda linearis</i>	native	
seashore dropseed, Virginia dropseed, seashore rush grass	<i>Sporobolus virginicus</i>	native	
seaside mahoe	<i>Thespesia populnea;</i> <i>talipariti tiliaceum</i>	invasive	
sedge	<i>Cyperus sp.</i>	native	

sedge - coastal sedge, flatleaf flatsedge	<i>Cyperus planifolius</i>	native	
sedge - marsh fimbry	<i>Fimbristylis castanea</i>	native	
sedge - queensland flatsedge	<i>Cyperus hyalinus</i>	native	
sedge - swamp flatsedge	<i>Cyperus ligularis</i>	non-native	
sensitive pea	<i>Chamaecrista nictitans</i>	native	
seven year apple	<i>Casasia clusiaefolia</i>	native	
shoestring fern, beard fern, grass fern	<i>Vittaria lineata</i>	native	Threatened
shortleaf fig, wild banyontree	<i>ficus citrifolia</i>	native	
shower tree	<i>Cassia sp.</i>	exotic	
showy milkwort	<i>Polygala violacea (did find polygala grandiflora that is native to FL)</i>	native to VI	
shrubby false buttonweed	<i>Spermacoce verticillata</i>	introduced	
slash pine	<i>Pinus elliotti</i>	native	
snowberry	<i>Chiococca alba</i>	native	
southern beeblossom	<i>Gaura angustifolia</i>	native	
southern fleabane, eastern daisy fleabane ??	<i>Erigeron annuus</i>	native	
sowthistle	<i>Sonchus oleraceus</i>	non-native	
Spanish bayonet (some say Spanish dagger)	<i>Yucca aloifolia</i>	native	
Spanish stopper	<i>Eugenia foetida</i>	native	
spreading cinchweed	<i>Pectis prostrata</i>	native	
spurge - beach spurge, graceful sandmat	<i>Chamaesyce hypericifolia</i>	native	
spurge - coastal beach sandmat	<i>Chamaesyce mesembrianthemajolium</i>	native	
spurge - coastal sandmat, coastal beach spurge	<i>Chamaesyce mesembrianthemifolia</i>	native	
spurge - dixie sandmat, sand-dune spurge, coastal dune sandmat	<i>Chamaesyce bombensis</i>	native	
spurge - pillpod sandmat, hairy spurge	<i>Chamaesyce hirta</i>	native	
spurge - spotted sandmat	<i>Chamaesyce maculata</i>	native	
strangler fig, golden fig	<i>Ficus aurea</i>	native	
sunflower, cucumberleaf sunflower	<i>Helianthus debilis</i>	native	
sweethearts, threeflower ticktrefoil	<i>Desmodium triflorum</i>	introduced	
tasselflower, Florida tasselflower	<i>emilia fosbergil</i>	introduced	
tea blinkum, sanddune chinchweed	<i>Pectis glaucescens</i>	native	
thin paspalum #5	<i>Paspalum setaceum</i>	native	
toothed latticevein fern, dentate	<i>Thelypteris serrata</i>	native	Endangered

lattice, vein fern			
trailing indigo	<i>Indigofera spicata forssk;</i> synonym: <i>Indigofera hendecaphylla</i>	introduced	
varnish leaf, Florida hop bush	<i>Dodonea viscosa</i>	native	
Virginia creeper, woodbine	<i>Parthenocissus quinquefolia</i>	native	
walking plant, life plant	<i>Kalanchoe pinnata</i>	exotic	
water sprite	<i>Ceratopteris thalictroides</i>	native	
wax myrtle, bayberry	<i>Myrica cerifera</i>	native	
whisk fern	<i>Psilotum nudum</i>	native	Threatened
white indigo berry, randia	<i>Randia aculeata</i>	native	
white stopper	<i>Eugenia axillaris</i>	native	
white vine, climbing hempvine	<i>Mikania scandens</i>	native	
wild allamanda	<i>Urechites lutea, Urechtites luteus</i>	native	
wild coffee	<i>Psychotria nervosa</i>	native	
wild lime	<i>Zanthoxylum fagara</i>	native	
wild petunia, Mexican bluebell, Britton's wild petunia	<i>Ruellia tweediana</i>	introduced	
wild poinsettia, painted leaf, fire-on-the-mountain	<i>Poinsettia cyathophora</i>	native	
winged sumac	<i>Rhus copallinum</i>	native	
wireweed, common fanpetals	<i>Sida Acuta</i>	native	
woman's tongue	<i>Albizia lebeck</i>	invasive	
yellow chocolate weed, uhaloa, sleepy morning	<i>Waltheria indica</i>	native	
yellow passion flower	<i>passiflora lutea L.</i>	native	
yellowtop, narrowleaf yellowtops	<i>Flaveria Linearis Lag.</i>	native	